



Multi Room

# MULTIELITE

Flexible and economical multi room comfort.



*That's better. That's Actron.*



**ActronAir**

# ActronAir. Because Australia needs Australian air conditioning.

The year 1984 saw Advanced Australia Fair become our National Anthem, the 1 dollar coin come into circulation and a small family air conditioning business open its doors. Today, ActronAir is a proud Australian company recognised for making world class air conditioners. Well, it stands to reason. The team at ActronAir experience the harsh Australian conditions first hand, and our climate places demands on air conditioning not found in other parts of the world.

And that's why ActronAir's engineers have developed the most advanced air conditioning systems specifically for the unique and harsh Australian environment.

Engineered with a superior operating range from -25°C to 50°C, and a host of innovative features, ActronAir's MultiElite multi split system is engineered to withstand the most extreme conditions Australia can throw at it.



**More than a quarter of a million Aussies take comfort in ActronAir**

## Share the comfort with the MultiElite multi split system

A single wall split air conditioning unit is great for a single room, however, if you need multiple rooms air conditioned, then you need to consider the MultiElite multi split system.

The beauty of our MultiElite is that it allows up to five individual air conditioning heads to be installed throughout your home, office or retail space, using just the one outdoor unit.



## A superior operating range suited for Australia

Most overseas air conditioners are only designed with a maximum temperature range of 43°C to 46°C. The MultiElite multi split system operates up to 50°C. Big deal? Well yes.

The temperature around the outdoor unit can reach far higher than what they're saying on the weather report due to direct sun or heat radiating off the ground. They're often located against a wall or fence where there's low air circulation.

“ Nothing beats performing under extremes. Engineered for Australia, you can trust ActronAir to be there when you need it most. ”

**Mark 'Frosty' Winterbottom**  
2015 V8 Supercars Champion

# Better Features

## Celebrate differences



### Different temperatures in different rooms

In a multiple room environment not everyone's preferred temperature is the same. Our MultiElite allows for different temperatures in different rooms at the same time.

## Engineered with you in mind



### Easy installation and commissioning

The MultiElite comes standard with a number of features to ensure installation is carried out with ease and accuracy. An additional service valve allows for quicker commissioning, while auto wiring correction eliminates any wiring errors, allowing your ActronAir installer to have you in superb comfort in a flash, saving time and money.

## Convenience, choice and cost cutting



### Capacity to suit your needs

The MultiElite has outdoor capacities ranging from 5kW to 14kW. The 5kW can connect up to 2 heads while the 14kW can connect up to 5 heads. These all connect to a single outdoor unit allowing for a better use of energy and space.



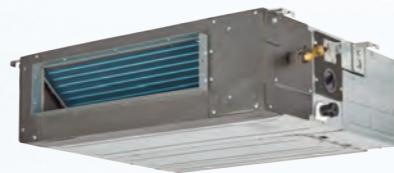
## Here for the long haul



### Coated coil protection

ActronAir uses blue fin epoxy coated protection on all indoor and outdoor coils. This reduces corrosion from the harsh Australian conditions, as well as helping with the defrosting process and improving the efficiency of all units.

## MultiElite indoor unit options



Bulkhead



Serene wall hung split

## Blackout proof



### Auto-restart

Blackout? No problem. MultiElite's auto-restart function means it restarts automatically in its last programmed setting once power is restored, which means you don't have to spend unnecessary time reprogramming your system.

# Better Control



## Better control in your hand...

MultiElite's remote controller (not compatible with bulkhead) features a large screen and buttons, all in easy to read 'plain English', for more logical and legible daily use.



Remote controller ONLY compatible with Serene indoor unit.  
NOT compatible with Bulkhead unit.

Remote controller

## ...and on the wall

For those who like a little more control, or who just keep losing the remote, MultiElite can also use a wall mounted wired controller that delivers precise temperature control.



Wired wall controller comes standard with Bulkhead indoor unit.  
Available as an optional upgrade for Serene indoor unit.

Wired wall controller

# Better Comfort

## Follow me for a more attuned temperature

In most air conditioners, the temperature sensor is in the indoor unit. With MultiElite, we have put additional sensors inside the remote controller and wired wall controller.

With the remote controller, when you press the Follow Me button you'll have the temperature you want, wherever you are in the room. When it comes to the wired wall controller, you'll have more precise temperature control and comfort at its location.

## Playing favourites

One of the great things with MultiElite is that you can pre-set your favourite comfort levels. This means that you can simply select these settings with the touch of a button on your remote.

## Shhh. Quiet mode in operation

For a good night's sleep, or if you simply seek silence, the MultiElite system has a quiet mode\* that reduces noise to a whisper-quiet level (between 20 and 30 decibels).#



# Better Engineered

## AC vs DC for rockin' efficiency and performance

The MultiElite system uses ultra-energy-efficient DC, or direct current, inverter technology in its inverter compressor, indoor fans and outdoor fans. Some companies use less efficient AC technology, or combinations of both. This can make a significant difference to your electricity bill.

With an impressive 25 frequency stages, our inverter compressor is up to 35% more efficient than AC technology, while our upgraded DC outdoor fan with five speed settings is up to 40% more efficient. The result is improved efficiencies overall, as well as optimal cooling performance.

\*Quiet mode available on Serene range only.  
#Based on models up to 5kW.



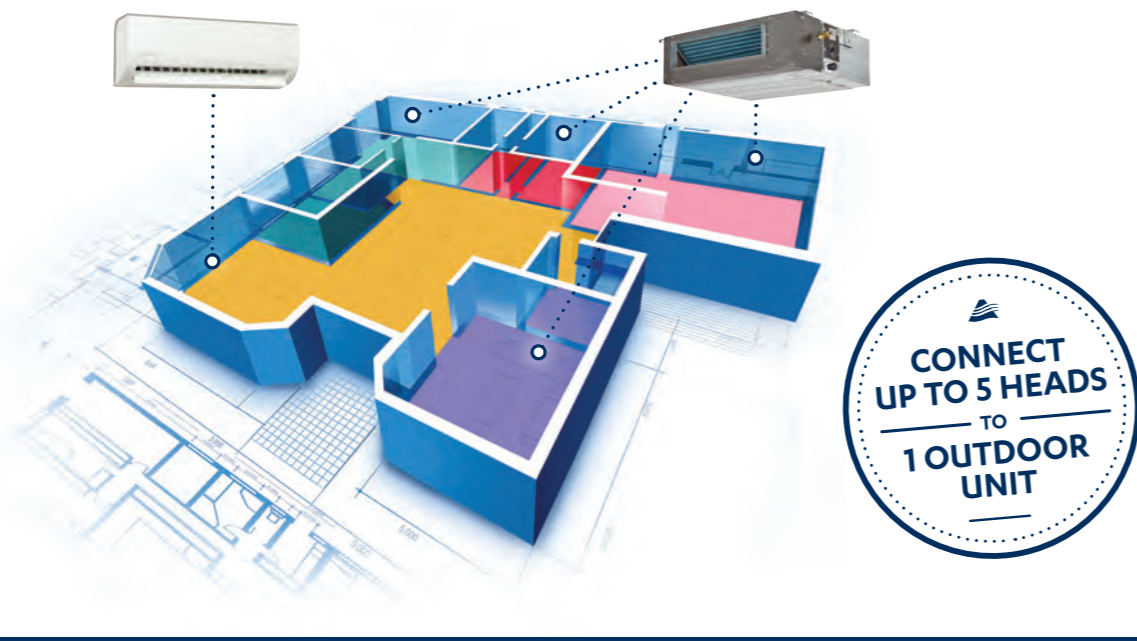


## The answer's easier with multiple choice

When there's more than one room and more than one configuration to consider, the MultiElite simply provides more solutions to meet your needs.

Our MultiElite multi-split system allows you to run up to five indoor units through a single outdoor unit. That's smart, because it can save not only space, but also energy. And while its powerful enough to keep the whole home in air conditioned comfort, MultiElite's DC inverter can also ramp right down to power a single room. MultiElite also allows you to pick the best solution for specific rooms, whether it's a concealed bulkhead system or the ever popular wall mounted systems.

With its choice of multiple indoor units, MultiElite also minimises those family fights over the thermostat, as you can have different temperatures in different rooms at the same time. Now that's better living!



## Better Service

### Local service you can count on

Our National Service Network has service staff on the ground and parts on the shelves. They're friendly, reliable and prompt. Furthermore, ActronAir's 5 year warranty will keep you comfortable with absolute peace of mind.

## MultiElite Combination Matrix

Outdoor Unit Models	Outdoor Unit Models				
	One Unit	Two Units	Three Units	Four Units	Five Units
MRC-052AS-2 5.20 kW	2.6	2.6+2.6	-	-	-
	3.5	2.6+3.5	-	-	-
	5	2.6+5	-	-	-
	-	3.5+3.5	-	-	-
	-	3.5+5	-	-	-
	-	-	-	-	-
MRC-075AS-3 7.50 kW	2.6	2.6+2.6	2.6+2.6+2.6	-	-
	3.5	2.6+3.5	2.6+2.6+3.5	-	-
	5	2.6+5	2.6+2.6+5	-	-
	7.1	2.6+7.1	2.6+3.5+3.5	-	-
	-	3.5+3.5	2.6+3.5+5	-	-
	-	3.5+5	3.5+3.5+3.5	-	-
	-	3.5+7.1	-	-	-
	-	5+5	-	-	-
MRC-100AS-4 9.85 kW	2.6	2.6+2.6	2.6+2.6+2.6	2.6+2.6+2.6+2.6	-
	3.5	2.6+3.5	2.6+2.6+3.5	2.6+2.6+2.6+3.5	-
	5	2.6+5	2.6+2.6+5	-	-
	7.1	3.5+3.5	2.6+3.5+3.5	-	-
	-	2.6+7.1	2.6+3.5+5	-	-
	-	3.5+5	3.5+3.5+3.5	-	-
	-	3.5+7.1	-	-	-
	-	5+5	-	-	-
MRC-110AS-5 10.95 kW	2.6	2.6+2.6	2.6+2.6+2.6	2.6+2.6+2.6+2.6	2.6+2.6+2.6+2.6+2.6
	3.5	2.6+3.5	2.6+2.6+3.5	2.6+2.6+2.6+3.5	2.6+2.6+2.6+2.6+3.5
	5	2.6+5	2.6+2.6+5	2.6+2.6+2.6+5	2.6+2.6+2.6+2.6+5
	7.1	2.6+7.1	2.6+2.6+7.1	2.6+2.6+3.5+3.5	-
	-	3.5+3.5	2.6+3.5+3.5	2.6+2.6+3.5+5	-
	-	3.5+5	2.6+3.5+5	2.6+3.5+3.5+3.5	-
	-	3.5+7.1	2.6+3.5+7.1	3.5+3.5+3.5+3.5	-
	-	5+5	2.6+5+5	-	-
	-	5+7.1	3.5+3.5+3.5	-	-
	-	7.1+7.1	3.5+3.5+5	-	-
	-	-	3.5+3.5+7.1	-	-
	-	-	3.5+5+5	-	-
MRC-135AS-5 13.50 kW	2.6	2.6+2.6	2.6+2.6+2.6	2.6+2.6+2.6+2.6	2.6+2.6+2.6+2.6+2.6
	3.5	2.6+3.5	2.6+2.6+3.5	2.6+2.6+2.6+3.5	2.6+2.6+2.6+2.6+3.5
	5	2.6+5	2.6+2.6+5	2.6+2.6+2.6+5	2.6+2.6+2.6+2.6+5
	7.1	2.6+7.1	2.6+2.6+7.1	2.6+2.6+2.6+7.1	2.6+2.6+2.6+3.5+3.5
	-	3.5+3.5	2.6+3.5+3.5	2.6+2.6+3.5+3.5	2.6+2.6+2.6+3.5+5
	-	3.5+5	2.6+3.5+5	2.6+2.6+3.5+5	2.6+2.6+3.5+3.5+3.5
	-	3.5+7.1	2.6+3.5+7.1	2.6+2.6+3.5+7.1	2.6+2.6+3.5+3.5+5
	-	5+5	2.6+5+5	2.6+2.6+5+5	2.6+3.5+3.5+3.5+3.5
	-	5+7.1	3.5+3.5+3.5	2.6+2.6+5+7.1	2.6+3.5+3.5+3.5+5
	-	7.1+7.1	3.5+3.5+5	2.6+3.5+3.5+3.5	3.5+3.5+3.5+3.5+3.5
	-	-	3.5+3.5+7.1	2.6+3.5+3.5+5	-
	-	-	3.5+5+5	3.5+3.5+3.5+3.5	-
	-	-	-	3.5+3.5+3.5+5	-
	-	-	-	-	-

NOTE: For actual capacities on the above combinations, please refer to the ActronAir technical catalogue.

# Technical Specifications

## Multi Split System 5.20-13.50kW (Single Phase)

Technical Information						
OUTDOOR MODEL		MRC-052AS-2	MRC-075AS-3	MRC-100AS-4	MRC-110AS-5	MRC-135AS-5
APPLICABLE INDOOR MODEL/S	Wall Hung	WRE-026AS	WRE-026AS	WRE-026AS	WRE-026AS	WRE-026AS
		WRE-035AS	WRE-035AS	WRE-035AS	WRE-035AS	WRE-035AS
		WRE-050AS	WRE-050AS	WRE-050AS	WRE-050AS	WRE-050AS
	Bulkhead	-	WRE-071AS	WRE-071AS	WRE-071AS	WRE-071AS
		BRE-026AS	BRE-026AS	BRE-026AS	BRE-026AS	BRE-026AS
		BRE-035AS	BRE-035AS	BRE-035AS	BRE-035AS	BRE-035AS
		BRE-052AS	BRE-052AS	BRE-052AS	BRE-052AS	
Nett (Rated) Capacity (kW) (AS/NZS3823.1.4)	Cooling (min - max)	5.20	7.50	9.85	10.95	13.50
	Heating (min - max)	5.80	8.10	9.90	11.20	14.80
Input Power (kW) (AS/NZS3823.1.4)	Cooling Rated	1.43	2.03	2.48	3.00	3.82
	Heating Rated	1.58	2.01	2.58	2.80	4.17
<sup>1</sup> EER Rated (AS/NZS3823.1.4)	Cooling Rated	3.64	3.69	3.97	3.65	3.53
<sup>2</sup> COP Rated (AS/NZS3823.1.4)	Heating Rated	3.67	4.03	3.84	4.00	3.55
Power Supply - (V / Ph / Hz)	Outdoor	220 - 240 V / 1Ph+N / 50Hz				
Rated Load Amps (AS/NZS3823.1.4)	Cooling	6.6	9.7	10.9	13.2	16.8
	Heating	7.2	9.6	11.4	12.4	18.3
Full Load Amps	<sup>3</sup> Maximum possible combination	16.1	18.8	19.7	25.7	30.7
	Outdoor Unit Only	14.0	15.8	16.0	21.0	25.8
<sup>4</sup> Circuit Breaker Amps and Main Cable Amps	Calculate based on installed combination and refer to AS/NZS3000 for correct size					
<sup>5</sup> Suggested Minimum Indoor to Outdoor Cable Size & Type		1.0mm <sup>2</sup> 3 Core + Earth	1.0mm <sup>2</sup> 3 Core + Earth	1.0mm <sup>2</sup> 3 Core + Earth	1.0mm <sup>2</sup> 3 Core + Earth	1.0mm <sup>2</sup> 3 Core + Earth
IP Rating	Outdoor	IP44	IP44	IP44	IP44	IP44
Compressor Type	Inverter Twin-Rotary					
Refrigerant	R410A					
Outdoor Dimensions (mm)	Depth	363	410	410	410	415
	Height	702	810	810	810	1333
	Width	845	946	946	946	952
<sup>6</sup> Nominal Weight (kgs)	Outdoor	48	67	71	77	102
<sup>7</sup> Outdoor Sound Pressure Level (dBA) 1m		59	61	61	65	65
<sup>8</sup> Outdoor Sound Power Level (dBA)		67	69	69	73	73
Outdoor Operating Range (°C)	Cooling	-15°C to 50°C				
	Heating	-25°C to 30°C				
MEPS Compliant		Yes	Yes	Yes	Yes	Yes

Field Piping and Connections						
Refrigerant Charge	Factory Charge - (g)	2150	3030	3300	3980	4980
	Pre-Charge Length - (m)	2 x 10	3 x 10	4 x 10m	5 x 10m	5 x 10m
	Additional Refrigerant Charge - (g/m)	15	15	15	15	15
Minimum Field Pipe Length - (m)	1 indoor unit	6	9	12	15	15
Maximum Field Pipe Length - (m)	For all rooms	40	60	80	80	80
	For 1 indoor unit	25	30	35	35	35
Maximum Vertical Height Differential (m) included in max length	From OD unit to ID unit	15	15	15	15	15
	From ID unit to ID unit	10	10	10	10	10
Outdoor Unit Connections	Liquid Pipe - mm (inch)	2 x 6.35 (1/4)	3 x 6.35 (1/4)	4 x 6.35 (1/4)	5 x 6.35 (1/4)	5 x 6.35 (1/4)
	Gas Pipe - mm (inch)	2 x 9.52 (3/8)	2 x 9.52 (3/8) + 1 x 12.7 (1/2)	3 x 9.52 (3/8) + 1 x 12.7 (1/2)	4 x 9.52 (3/8) + 1 x 12.7 (1/2)	3 x 9.52 (3/8) + 2 x 12.7 (1/2)
Adaptors to connect field pipe are supplied with outdoor (MRC) unit		Yes	Yes	Yes	Yes	Yes
Wiring Method	Hardwire to Outdoor					

### Foot Notes 1-9

- EER Rated = Energy Efficiency Ratio (Rated Capacity Cooling, Rated Input Power Cooling)
- COP Rated = Coefficient of Performance (Rated Capacity Heating, Rated Power Heating)
- Maximum FLA based on the following combination:  
MRC-052AS-2 + BRE-026AS + BRE-052AS  
MRC-075AS-3 + BRE-026AS + BRE-035AS + BRE-052AS  
MRC-100AS-4 + BRE-026AS (x3) + BRE-035AS  
MRC-110AS-5 + BRE-026AS (x3) + BRE-035AS (x2)  
MRC-135AS-5 + BRE-026AS + BRE-035AS (x3) + BRE-052AS  
Each installation will require calculation of selected combination (Outdoor + Indoor/s) for correct Full Load Amps.
- Based on MEPS registered combination.
- Refer to AS/NZS 3000 'Australian/New Zealand Wiring Rules' for more details.

- Refer to Catalogue Unit Weight Distribution Guide section for details of weight points.
- Sound Pressure Level at 1m distance is determined as the measured sound pressure at 1m perpendicular to the coil side of the condenser.
- Determination of Sound Power Levels of Noise Sources, AS12172 - Precision Methods for Broad-Band Sources in Reverberation Rooms.
- When Demand Response capability option is chosen, the air conditioner will be fully compliant with AS4755.3 in the following modes: DRM 1, 2, 3

### Important Notes:

- The Local Electricity Supply Authority may require limits on - starting current, running current and voltage drop, please check prior to purchase.
- When the outdoor temperature exceeds the rated conditions, the cooling/heating capacities may decrease the rated nett values.
- Specifications subject to change without notice.

Technical Information (Applicable Indoor Models)								
INDOOR MODEL		WRE-026AS	WRE-035AS	WRE-050AS	WRE-071AS	BRE-026AS	BRE-035AS	BRE-052AS
IP Rating		IP20						
Airflow Range	Turbo	167	194	333	403	-	-	-
	High	161	181	306	386	167	200	222
	Medium	133	158	264	356	150	167	169
	Low	106	117	211	242	128	150	144
	Quiet	78	97	158	144	-	-	-
Indoor Dimensions	Depth	193	222	222	232	635	635	635
	Height	302	325	325	342	210	210	210
	Width	805	964	964	1106	700	700	920
Full Load Amps (AS/NZS3823.1.2) - Indoor Unit		0.240	0.275	0.275	0.400	0.930	0.930	1.150
Nominal Weight		8.5	10.3	10.4	13.7	18.1	18.1	23.0
Indoor Sound Pressure Level (dBA) (Quiet / Low / Med / High / Turbo)		28 / 32 / 37 / 42 / 43	28 / 31 / 38 / 43 / 45	29 / 37 / 42 / 44 / 45	32 / 36 / 44 / 47 / 49	- / 30 / 33 / 36 / -	- / 34 / 36 / 39 / -	- / 37 / 39 / 42 / -
Indoor Unit Connections	Liquid Pipe - mm (inch)	6.35 (1/4)	6.35 (1/4)	6.35 (1/4)	9.52 (3/8)	6.35 (1/4)	6.35 (1/4)	6.35 (1/4)
	Gas Pipe - mm (inch)	9.52 (3/8)	12.7 (1/2)	12.7 (1/2)	15.9 (5/8)	9.52 (3/8)	9.52 (3/8)	12.7 (1/2)
Field Pipe Size	Liquid Pipe - mm (inch)	6.35 (1/4)	6.35 (1/4)	6.35 (1/4)	9.52 (3/8)	6.35 (1/4)	6.35 (1/4)	6.35 (1/4)
	Gas Pipe - mm (inch)	9.52 (3/8)	12.7 (1/2)	12.7 (1/2)	15.9 (5/8)	9.52 (3/8)	9.52 (3/8)	12.7 (1/2)

Features								
Remote Controller - RC-01 (NOT compatible with Bulkhead)	Yes	Yes	Yes	Yes	N/A	N/A	N/A	N/A
Wired Wall Controller - WC-02	Optional	Optional	Optional	Optional	Yes	Yes	Yes	Yes
Follow Me Function	Yes	Yes	Yes	Yes	Yes	Yes	Yes	Yes
Sleep	Yes	Yes	Yes	Yes	Yes	Yes	Yes	Yes
Turbo	Yes	Yes	Yes	Yes	N/A	N/A	N/A	N/A
Auto Defrost Function	Yes	Yes	Yes	Yes	Yes	Yes	Yes	Yes
Mute Operation	Yes	Yes	Yes	Yes	N/A	N/A	N/A	N/A
Timer On/Off	Yes	Yes	Yes	Yes	Yes	Yes	Yes	Yes
7-Day Scheduler / Weekly timer	Optional	Optional	Optional	Optional	Yes	Yes	Yes	Yes
Dehumidification	Yes	Yes	Yes	Yes	Yes	Yes	Yes	Yes
Return Air Sensor	N/A	N/A	N/A	N/A	Yes	Yes	Yes	Yes
External Static Pressure Settings	N/A	N/A	N/A	N/A	Yes	Yes	Yes	Yes
Drain Pump	N/A	N/A	N/A	N/A	Yes	Yes	Yes	Yes
Bottom Return Air connection	N/A	N/A	N/A	N/A	Optional	Optional	Optional	Optional
Outside Air Intake	N/A	N/A	N/A	N/A	Optional	Optional	Optional	Optional
Hanging Brackets	N/A	N/A	N/A	N/A	Yes	Yes	Yes	Yes
Multi Directional Airflow	Up - Down	Automatic	Automatic	Automatic	Automatic	N/A	N/A	N/A
	Left - Right	Automatic	Automatic	Automatic	Automatic	N/A	N/A	N/A
Hydrophilic Aluminium Coil Protection	Indoor	Yes	Yes	Yes	Yes	Yes	Yes	Yes
	Outdoor	Yes	Yes	Yes	Yes	Yes	Yes	Yes
Louvre Memory	Yes	Yes	Yes	Yes	N/A	N/A	N/A	N/A
<sup>9</sup> Demand Response	Ready	Ready	Ready	Ready	Ready	Ready	Ready	Ready
Indoor Fan Speed	12 Grades	12 Grades	12 Grades	12 Grades	3	3	3	3
Quiet Mode	Yes	Yes	Yes	Yes	N/A	N/A	N/A	N/A
Auto Restart After Power Failure	Yes	Yes	Yes	Yes	Yes	Yes	Yes	Yes
Fault Alarm Output Port	Yes	Yes	Yes	Yes	Yes	Yes	Yes	Yes
Remote On/Off	Yes	Yes	Yes	Yes	Yes	Yes	Yes	Yes
Left-Right Hand Drain Connection	Yes	Yes	Yes	Yes	Yes	Yes	Yes	Yes

### Rated Conditions:

Cooling: 35°C DB Outdoor / Air Entering Indoor 27°C DB, 19°C WB  
Heating: 7°C DB, 6°C WB Outdoor / Air Entering Indoor 20°C DB

### Warranty:

For full terms and conditions of ActronAir warranty, please refer to warranty terms document - www.actronair.com.au





# ActronAir

*That's better. That's Actron.*

[actronair.com.au](http://actronair.com.au)

1300 522 722